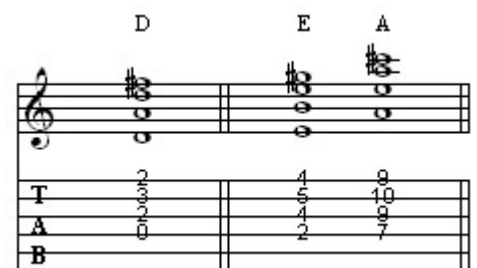
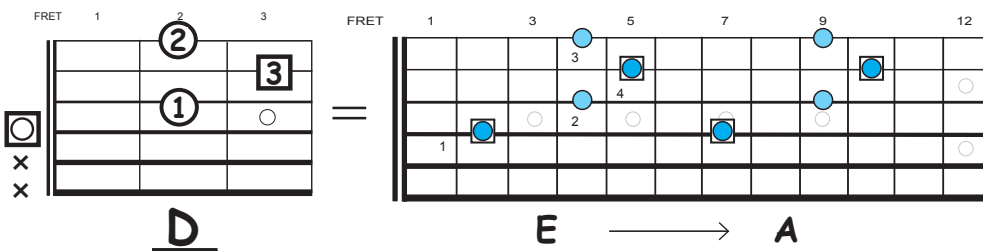
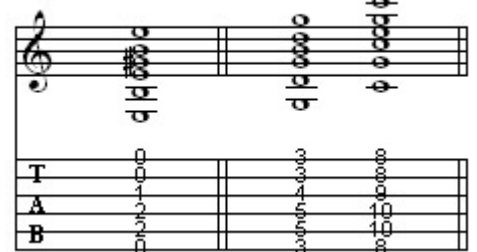
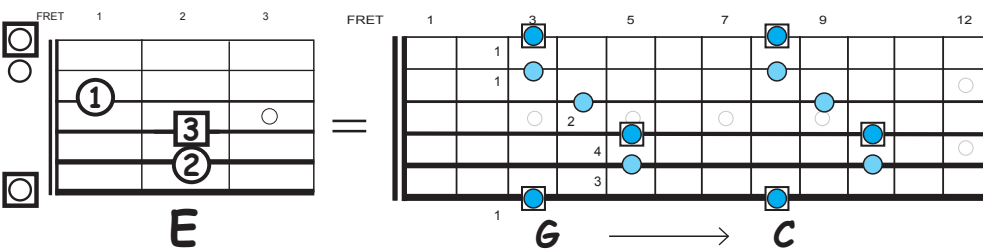
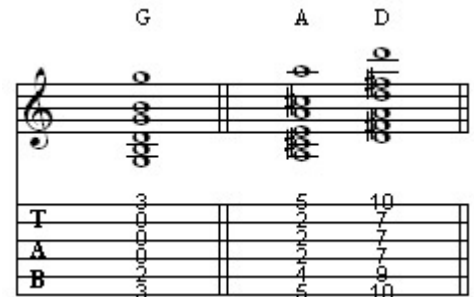
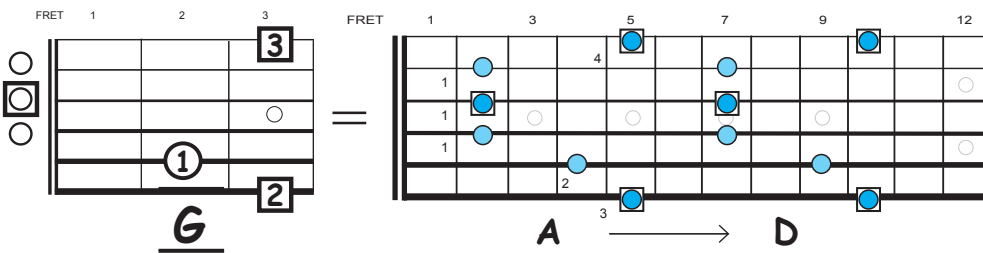
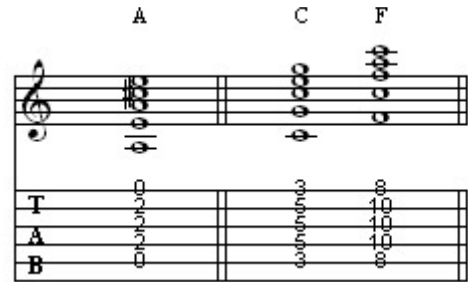
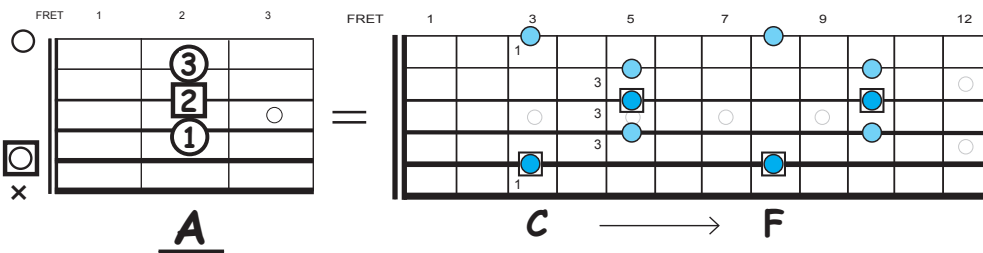
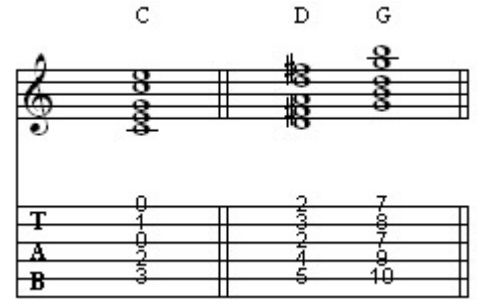
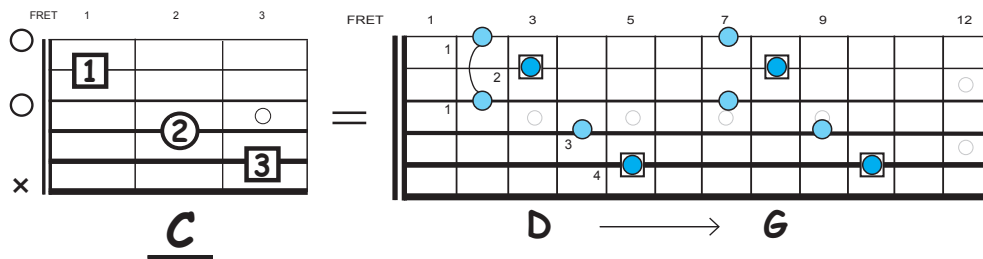


THE CAGED SYSTEM pt. 1

A lot of students over the years enquire about the CAGED system. It's no big deal, just another way to help your poor brain organise patterns and shapes over the neck. A worthy cause - so let us proceed.....

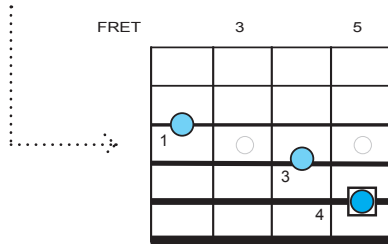
It simply equates back to the open position C A G E and D chords forming the foundation for any other chord shape occurring over the neck. Source shapes if you will.



THE CAGED SYSTEM pt. 1

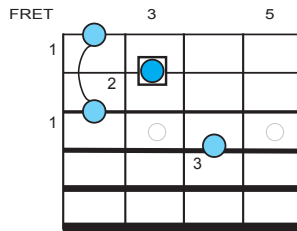
As you can see from the examples on page 1, some of these shapes aren't all that easy to grab in a hurry, notably the D and G based patterns. To make these shapes more useful they tend to be broken down into smaller units.

Here are some typical 'C' based shapes

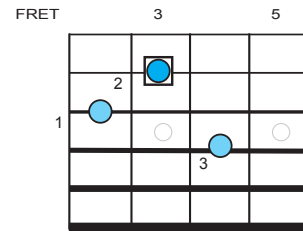


'A' based shapes

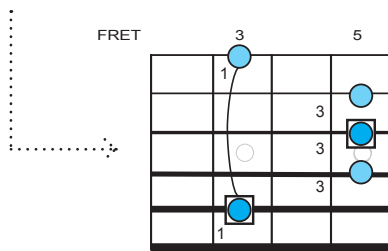
D



D

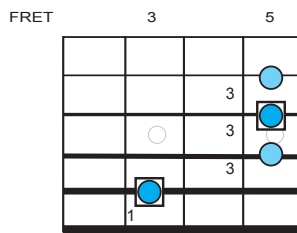


D

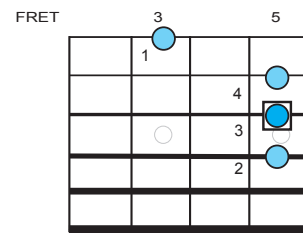


'G' based shapes

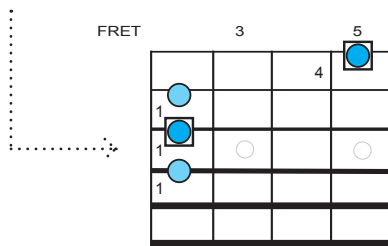
C



C

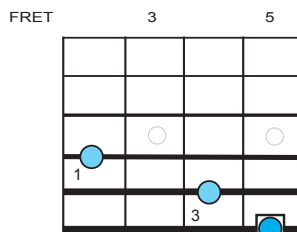


C

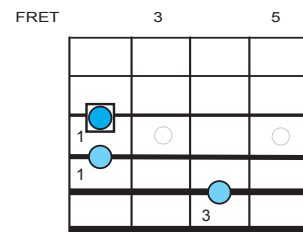


'E' based shapes

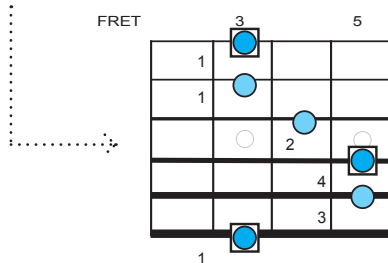
A



A

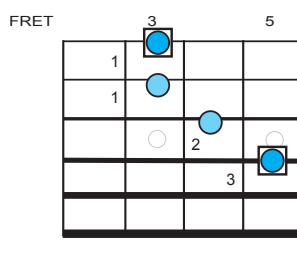


A

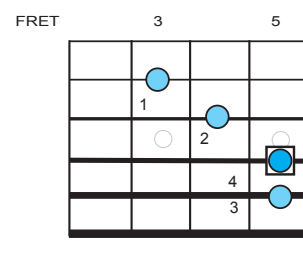


'D' based shape

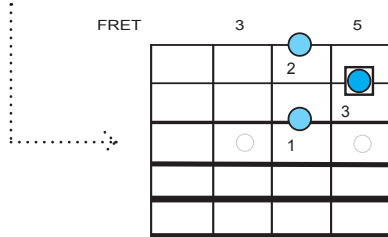
G



G



G



E