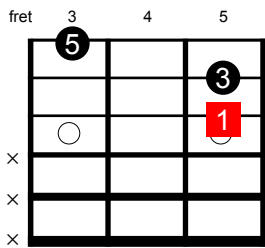


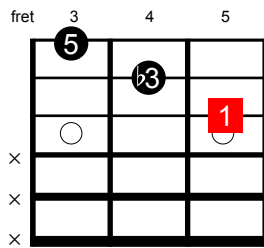
## TRIAD TYPES (root position - close voicings)

The 4 main pillars of western European Harmony are the Major, Minor, Diminished and Augmented triads. Here's a rundown of the root position versions of each on all the possible string sets.

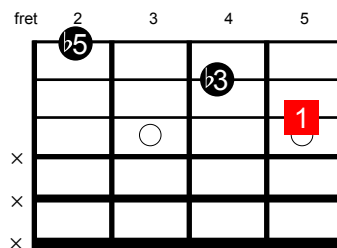
$\Delta$  = Major 1 3 5    $-$  = Minor 1  $\flat$ 3 5    $\circ$  = Diminished 1  $\flat$ 3  $\flat$ 5    $+$  = Augmented 1 3  $\sharp$ 5



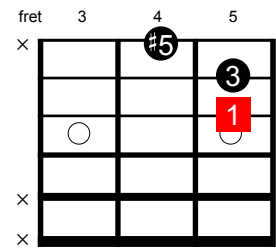
C $\Delta$



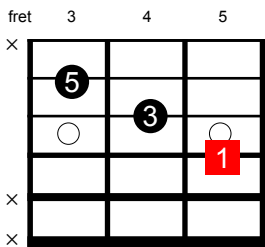
C $-$



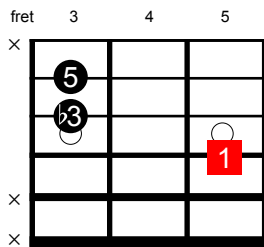
C $^\circ$



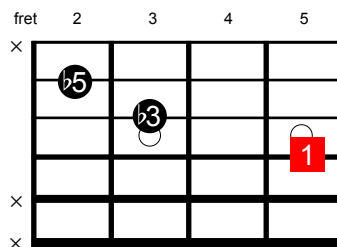
C $+$



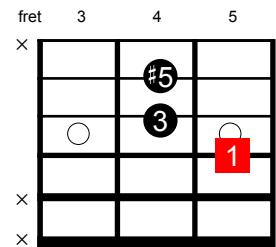
G $\Delta$



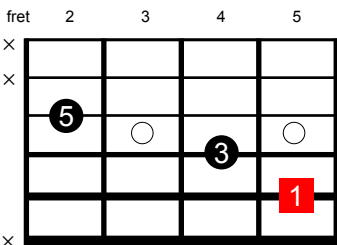
G $-$



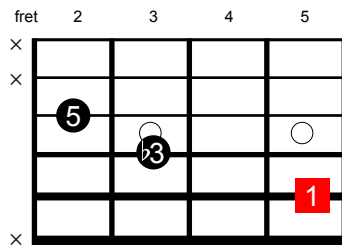
G $^\circ$



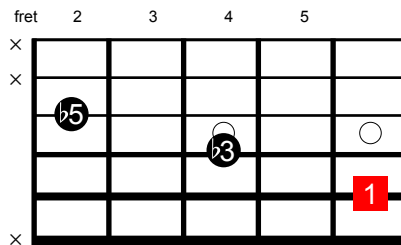
G $+$



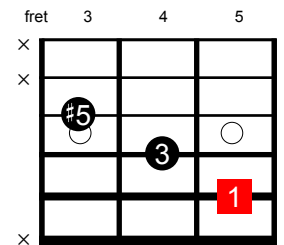
D $\Delta$



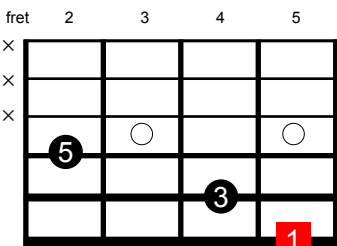
D $-$



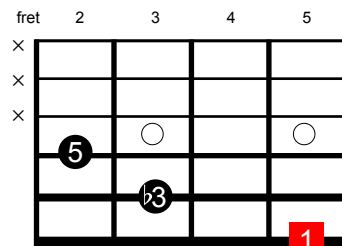
D $^\circ$



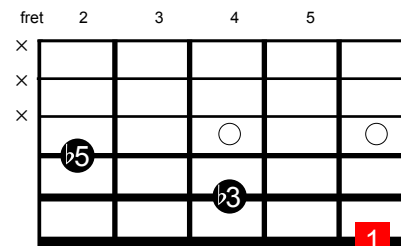
D $+$



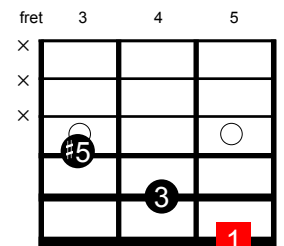
A $\Delta$



A $-$

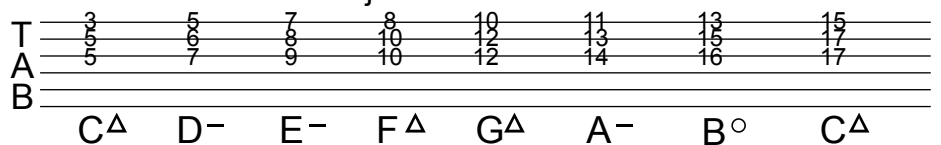


A $^\circ$

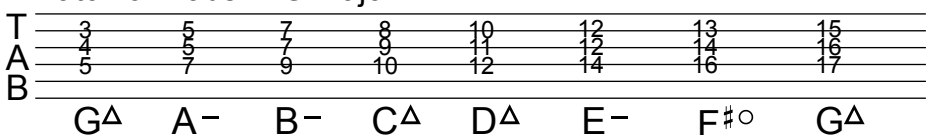


A $+$

### Diatonic Triads in C major



### Diatonic Triads in G major



Do them on other string sets - also explore other scales eg. the melodic or harmonic minor for example.

Check out the Triad Type video :- <http://youtu.be/8uy3jDyRXnE>