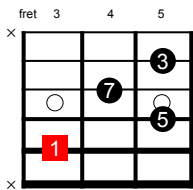


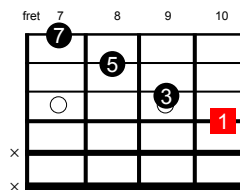
## 7th CHORD CLOSE VOICINGS (root position)

Closed voiced 7th chords sound great but many are extremely challenging for us poor guitarist's as they're murder on the fretting hand ( notably the inversions ). This is a problem keyboardists and arrangers don't have to worry about.

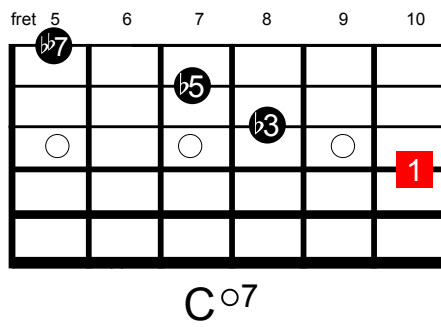
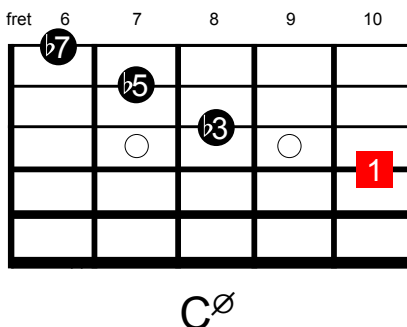
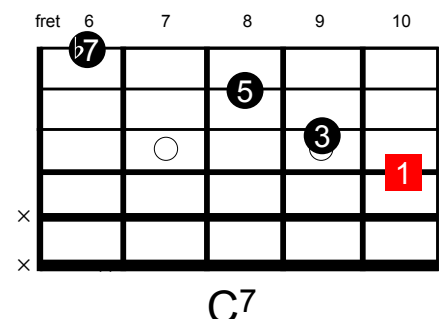
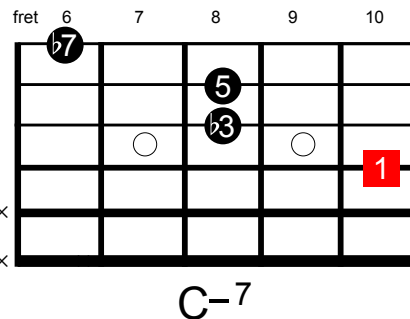
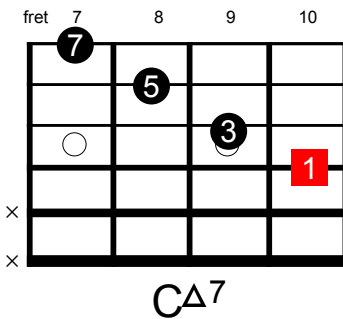
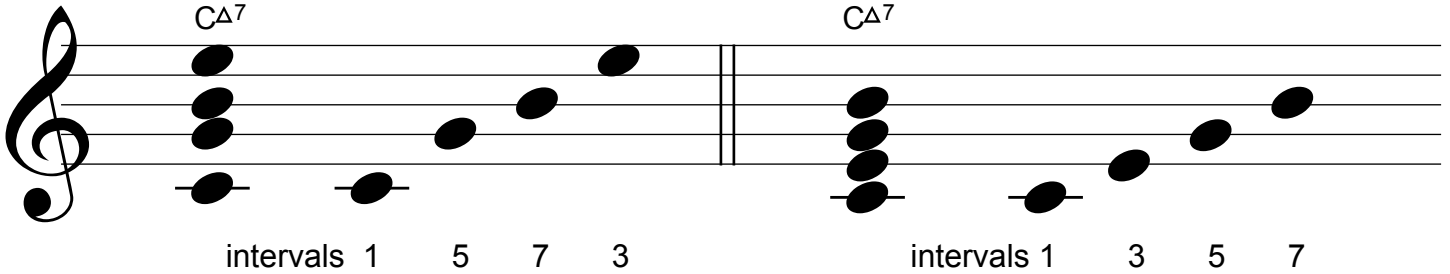
Ok so what is a close voicing ? It's basically the 4 intervals of any 7th chord played in numeric order.



Typical Drop 2 type voicing. Standard for guitar.



Close voicing.



Tip - replace the 7 on the top E string with the 6 for the Cmaj7, Cmin 7 and C7 to create C6 and Cmin6 voicings.

The Cmaj7 won't be a big deal for many, it's a standard "jazz" voicing - as it's nice and easy on the fingers. The other perhaps not so finger friendly, no pain - no gain ! right ?

Plug these into progressions you like and practise diatonic sequences in various keys.

Close voicings create a nice lush harmonic sound, They're worth the effort and you may even get some grudging respect from your keyboard player buddies.